

TRANSFORMING SERVICES THROUGH PARTNERSHIPS WITH SOCIAL CARE

MARK ALLMAN, LEEDS CITY COUNCIL
VICE CHAIR CLOA



HEALTH AND SOCIAL CARE ACT 2012

FRAMEWORKS: PUBLIC HEALTH/ADULT SOCIAL CARE/NHS/CHILDREN

DRIVERS FOR CHANGE

PREVENTION
GROWING COST OF SOCIAL CARE
AUSTERITY
NEW WAYS OF WORKING



DAY CARE TRANSFORMATION

INTEGRATION WITH LEISURE

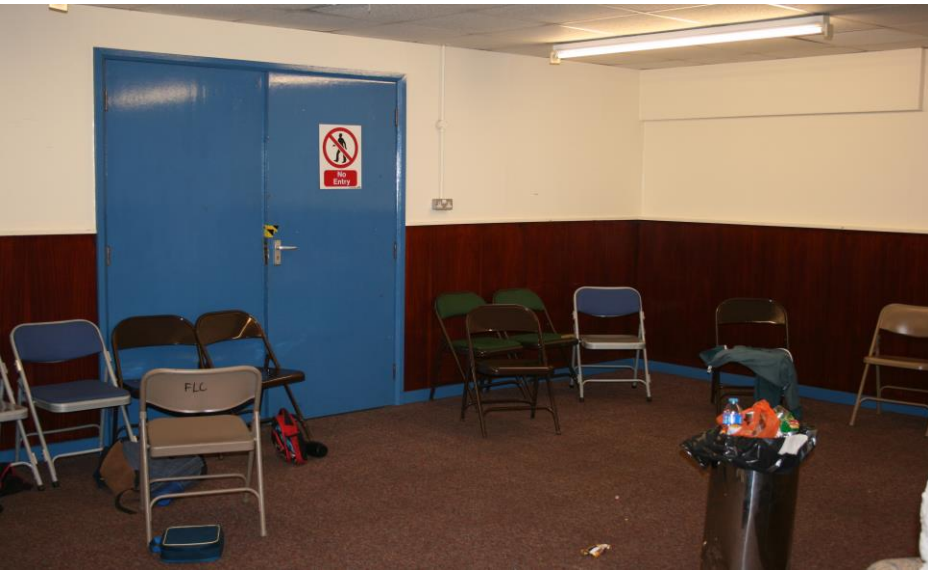
9X SITES (LEARNING DISABILITY)

SINCE 2011/12: JOHN CHARLES/AIREBOROUGH/PUDSEY/ROTHWELL/MIDDLETON/HOLT
PARK/KIRKSTALL/FEARNVILLE/SCOTT HALL/GARFORTH

1X SITE LD/OLDER PEOPLE/PHYSICAL IMPAIRMENT (HOLT PARK)

EXPLORING OLDER PEOPLE VENUE OPTIONS







MAKING IT HAPPEN

RELATIONSHIP BUILDING: MEMBERS, CLIENTS, AND
STAFF

DEVELOP TRUST/SHARED VISION

SHOW IT WORKS

TAKE MEASURED RISKS



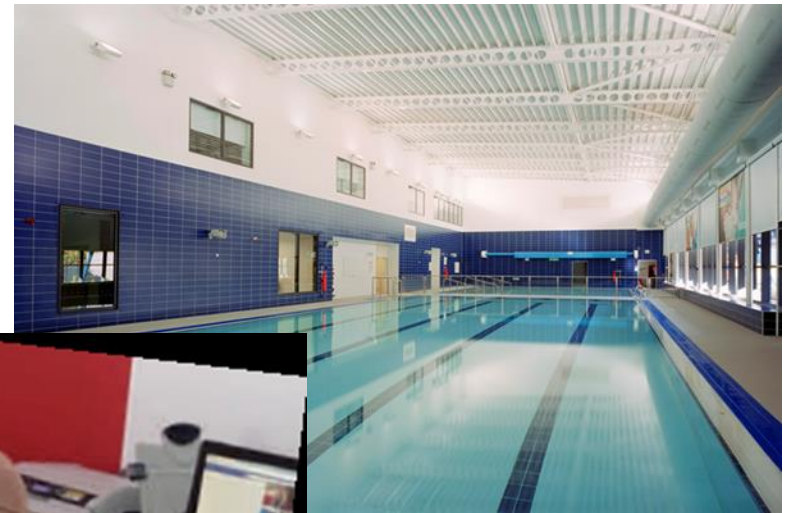
CASE STUDY “HOLT PARK ACTIVE”



HOLT PARK ACTIVE

£28m Department of Health PFI project

- a 'wellbeing centre'
- Fully integrated services
 - sport
 - learning disability
 - older people
 - physical disability



HOLT PARK LEISURE CENTRE

- opened 1976
- 186,000 visits 2011/12
- 6 court hall
- leisure pool
- squash courts
- 38 station gym
- meeting room
- youth room



HOLT PARK ACTIVE

- District centre/
opened 2013
- 275,000 visits yr1
- 2 court hall
- 25m & learn pool
- hydro pool
- 65 station gym
- meeting rooms
- café
- garden/studio/training kitchen



SPORT & ACTIVE LIFESTYLES SERVICE

- Opportunities for people living in Leeds to enjoy the benefits of an active lifestyle.
- 15 leisure centres.
- 4million visits a year
- Increase the participation in sport and physical activity of targeted groups, including young people, people aged 45 plus, disabled people, women, and those who are looking for something different to traditional forms of exercise.



ADULT SOCIAL CARE

PROVIDES CARE AND SUPPORT FOR VULNERABLE ADULTS

- ASC assesses people's social care needs and ensures those needs are met either by services we provide ourselves and with partners or services we commission from other providers.
- People who access ASC support have a wide range of needs including mental health, dementia, physical impairment, learning disability and the challenges associated with old age, including end of life care
- everything we do is aimed at promoting people's well being and health

VISION: "BETTER LIVES FOR PEOPLE IN LEEDS"



COMMON OBJECTIVES

- Best City for Health & Wellbeing: Improving health & wellbeing through sport & promoting active lifestyles;
- Widening access to being active and taking part in sport;
- Inclusive community provision - Integrating users into mainstream facilities and activities within the user's local community;
- Providing accessible social care, re-ablement and leisure services;
- Accessible and integrated services (integration of ASC services!);
- Financial – achieve something better with less resources.



HOW IT WORKS

FINANCIAL & RESOURCES

- One leisure centre closed
- Three day centres closed
- Savings go to pay unitary charge / new services / budget savings targets
- Unitary charge split between the services
- Hire income goes to sport
- Staff paid by relevant services
- Notices of change paid by the service asking for the change



HOW IT WORKS

OPERATIONAL

- sport manages the building, programme and PFI contract
- SLA between sport & ASC to agree ASC preferred spaces and times
- staff provided by each service to carry out their own programmes
- weekly meetings between services to ensure issues are dealt with
- all staff share same office space
- reception staff provided by sport but shared over all services
- public have use of all spaces not booked by ASC



OUR PARTNERS



THE IMPACT...

CUSTOMERS (SPORT & ASC)

- Additional 100k users (now 275,000 in first year)
- New users from ASC 3 services staying between 1 and 5 days a week now having access to sports facilities as well as traditional day care (Regular users per week: 60 older people/24 LD/52 PI: 40 overall take part in sport)
- ASC users report enjoying integration into a community setting, being involved in a wider community, communicating with young people and sharing their experiences
- Initial concerns moving from established day centres to Holt Park have gone. Current ASC customers welcome new ones and integrate them into the community





THE IMPACT...

STAFF (SPORT & ASC)

- Project used as an example of good partnership working throughout the council (Manager Challenge)
- Sickness rates lower at this site
- Sharing of skills (training team will train 2 services at a time)
- New activities possible that could not be operated by one service (hydro pool – lifeguarded by sport and physio from ASC)
- ASC joining main stream activities (highest % of older people and people with disabilities in the city using Bodyline gym)



THE FUTURE?

- Executive Board approval for a new wellbeing centre
- ASC developing new facilities in the leisure centres (now 7 x learning disability. Older people coming 2015)
- Joined up training programmes on disability awareness & safeguarding
- Strategic planning: Joint Services Board for future developments – Sport / ASC / Public Health / Asset Management

