



# A network for 'whole place' learning

RSA's Cities of Learning

01 November 2022

Led by



In partnership with



# RSA Perspectives

*the way we think about challenge and change*

## **Systemic**

We see and change systems in nested and interconnected ways

## **Collective**

We bring the power and wisdom of the collective to lead change, with people at the heart

## **Imaginative**

We draw on our capacity for imagination to create alternatives to the reality that we know

## **Long-term**

We hold a long-term view of success and consequence beyond this generation

## **Adaptive**

We recognise that change is living and uncertain as we test and iterate to improve ways forward

## **Local to global**

We start with place and context to impact bioregionally and globally

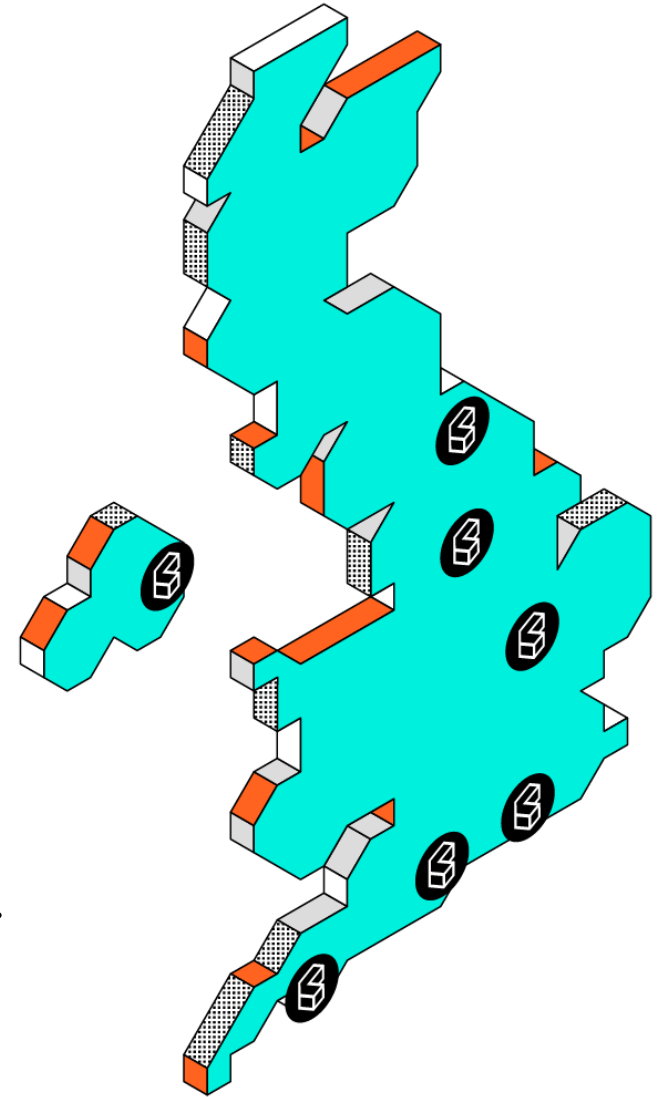
# Pilot to Programme: Cities of Learning

*Together, we put learning on the map.*

First piloted in 2018, Cities of Learning is a social and digital innovation designed to help learners grow their skills and confidence and discover opportunities on their doorstep.

Using **digital badges** to build a shared language and currency of skills Cities of Learning helps recognise the '**hidden learning**' in a place and connect people to opportunities to further their to learning, career, or well-being.

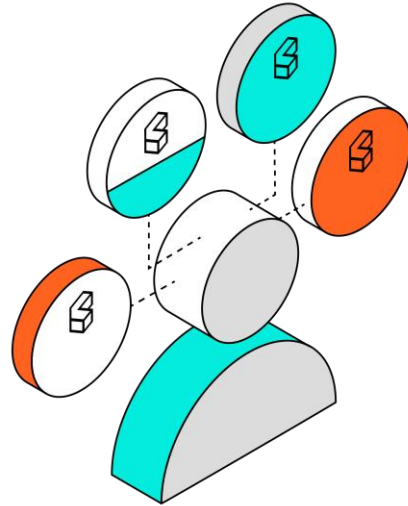
The aim is to make fragmented systems more than the sum of their parts.



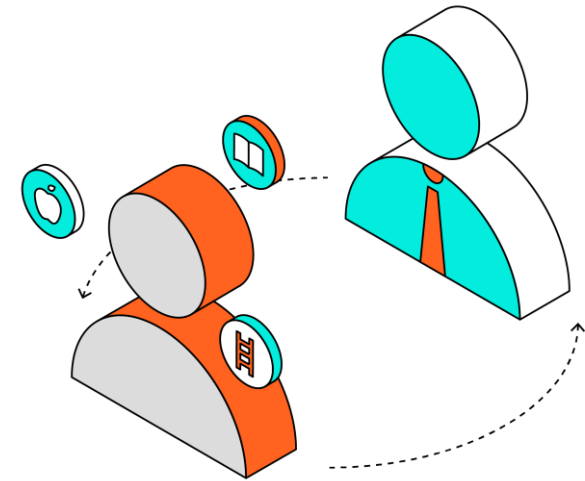
# We work with places to make 'hidden skills'...



**Visible**



**Measurable**



**Connected**

# Connected – An Ecosystemic Approach to Change

Systems  
Mapping

Research

Convening

National  
Networks

Systems  
Innovation

Evaluation



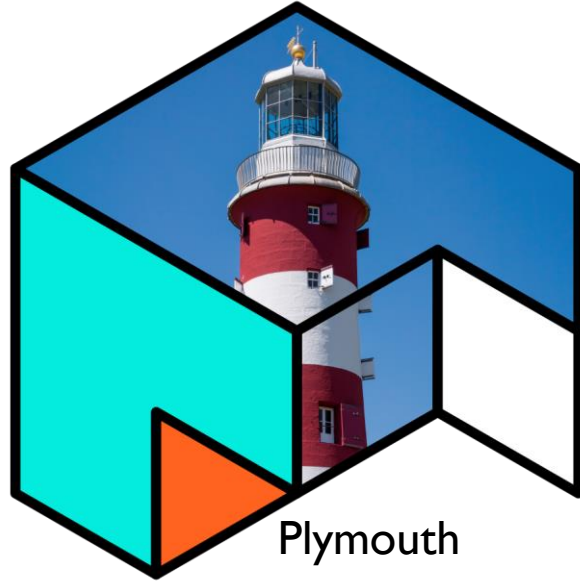
# Connecting points of learning

- Rebalancing Lifelong Learning – new report due Nov 2022
- How to engage learners who haven't thrived in traditional systems
- Build learner identity capital through validating non-formal learning
- Provide social capital through peer recognition
- Building foundational skills in community settings

# Cities of Learning Leadership Network



Southampton



Plymouth



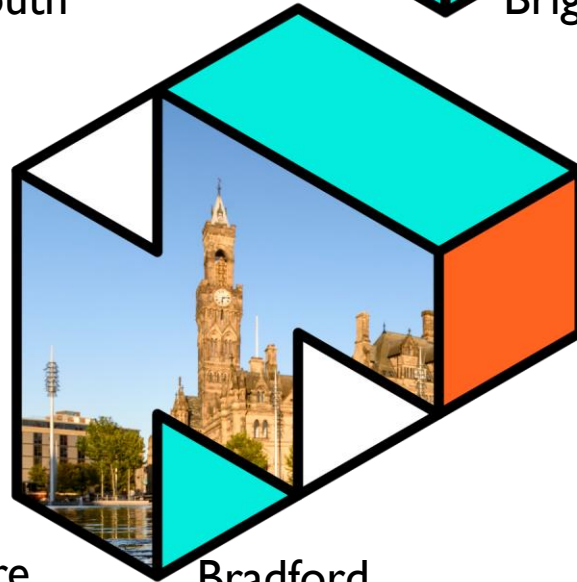
Brighton



Tees Valley



Cambridgeshire  
Peterborough



Bradford



Belfast

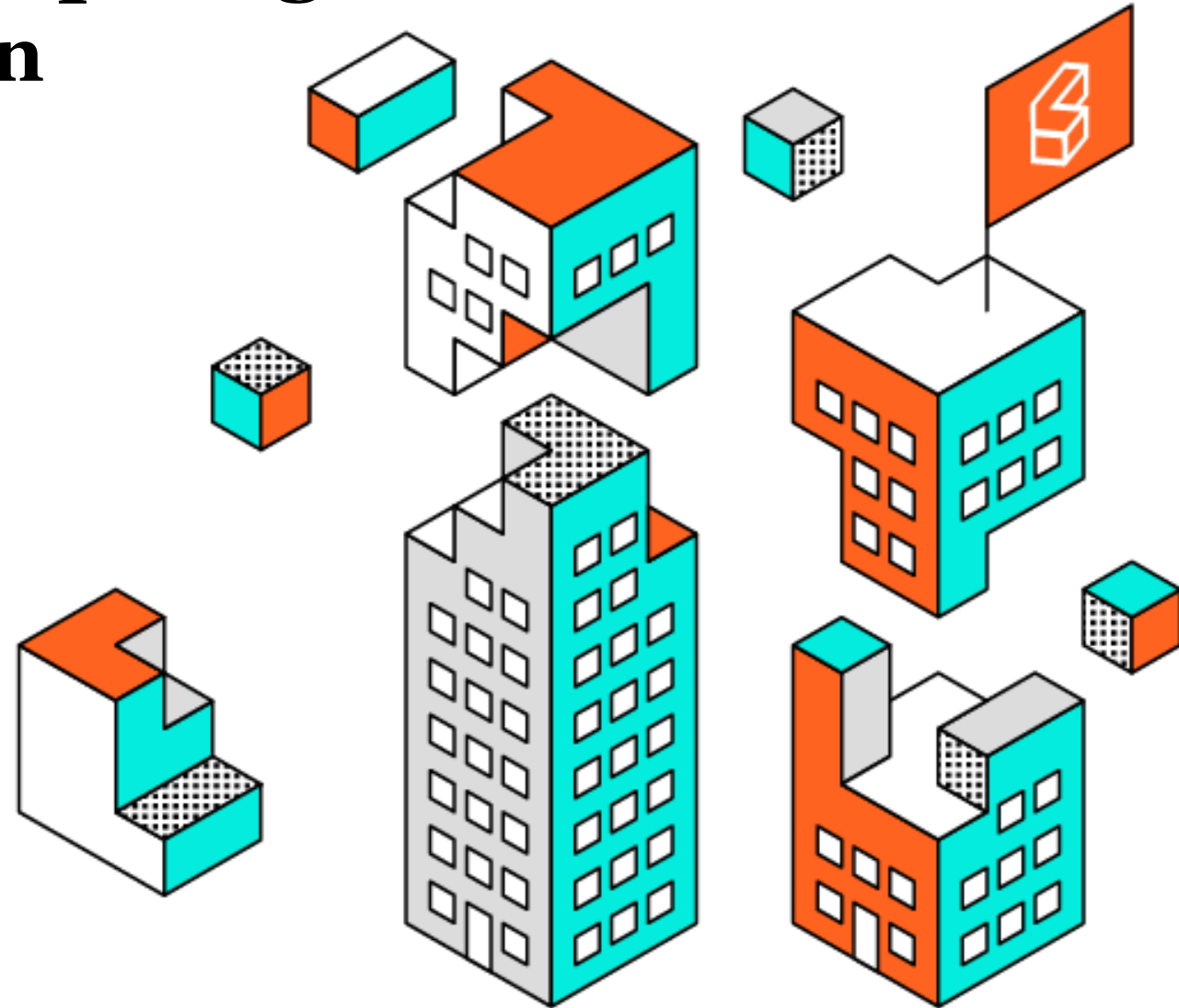
# Cities of Learning Leadership Programme

## Activation not accreditation

A 12-month programme to support place-based leaders and teams to develop skills as a Cities of Learning lead, who:

- Diagnoses local skills needs and gaps,
- Convenes impact networks,
- Establishes scalable badging and pathways strategies.

Throughout the journey, City/Region Leads from across the country work as a peer group to learn with and from each other.





Thank You

