

Meeting the challenge of the rising costs of cultural services

Case Study – Camden Council

Qasim Akhtar - Senior Sustainability Officer

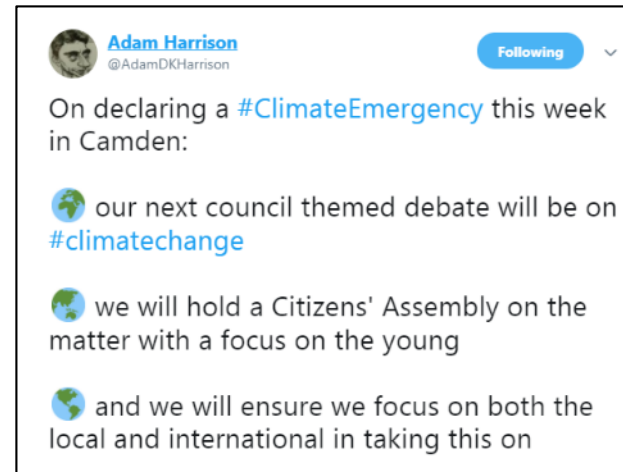
Gary Watson – Senior Building Surveyor

Fiona Tarn – Head of Libraries



Citizens' assembly on the climate crisis

- Climate emergency declaration in April 2019.
- UK's first Citizens' Assembly on the climate crisis held over summer of 2019.
- Demographically reflective of Camden.
- Independent facilitation and evaluation from Involve and University College London.
- 17 proposals for how Camden should tackle the climate crisis



Citizens Assembly 17 Recommendations

Home

- Encouraging low-carbon dietary choices.
- Making all new homes 'zero carbon'.
- Creating more green space on residential streets.
- Fitting solar panels on as many homes as possible.
- Campaigning to make CO2 reduction fun.

Neighbourhood

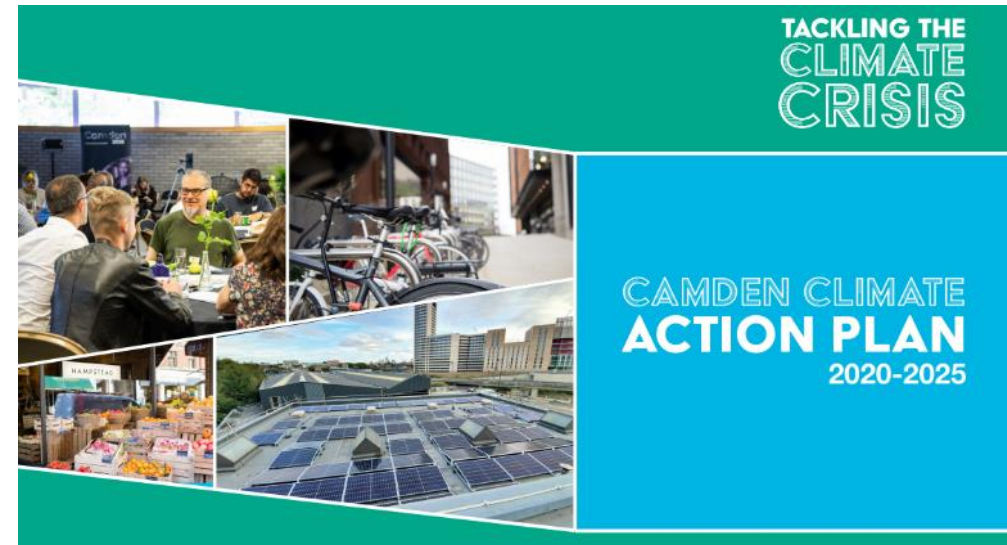
- Planting more trees and creating more allotments.
- Piloting a community energy heating scheme.
- Installing more 'segregated' cycle lanes.
- Promoting and trialling car free zones and days.
- Enabling electric transport with infrastructure and incentives.
- Developers to fund energy efficiency retrofits of old buildings.

Council

- Establishing a Climate Emergency scrutiny panel made up of experts and residents.
- All council properties to be fossil-fuel free.
- Planting trees and retaining public spaces.
- Improving council communications and engagement on the climate crisis.
- Mobilising existing community groups to work on tackling the climate crisis.
- Greening the Council's operations.

Climate Action Plan

- Climate Action Plan published in June 2020.
- Incorporates recommendations of Citizens' Assembly and findings of a technical carbon reduction study for Camden.
- 17 recommendations from the Citizens Assembly
- Plan is structured around four key vision areas to support a zero carbon Camden.
- Committed to do everything it can to make Camden net zero carbon by 2030.



ZERO CARBON CAMDEN BY 2030

People - Everyone who lives, works, studies and visits the borough will be well informed and actively contribute to tackling the climate crisis in all aspects of their lives.



Places - Camden's public spaces will encourage and enable healthy and sustainable travel choices and promote biodiversity.



Buildings - Camden's buildings will be energy efficient, comfortable and fit-for-purpose for a zero carbon future.



Organisations - All organisations in Camden will operate responsibly and embed tackling the climate crisis throughout their operations.

Camden Climate Change Alliance



Zero Carbon Camden By 2030

ZERO CARBON CAMDEN BY 2030

People - Everyone who lives, works, studies and visits the borough will be well informed and actively contribute to tackling the climate crisis in all aspects of their lives.



Places - Camden's public spaces will encourage and enable healthy and sustainable travel choices and promote biodiversity.



Buildings - Camden's buildings will be energy efficient, comfortable and fit-for-purpose for a zero carbon future.



Organisations - All organisations in Camden will operate responsibly and embed tackling the climate crisis throughout their operations.

**Camden
Climate Change
Alliance**



Swiss Cottage Library and Art Gallery



- A grade II listed building
- Designed by Sir Basil Spence, opening to the public in 1964.
- 52,506 sq. ft, largest library operated by Camden Council.
- The library and art gallery needed renewal with fabric, mechanical and electrical plant being at end of life. One of the largest consumers of energy on the council's estate, making it a priority site for improvement.
- The project will ensure that building users will have better comfort levels and will ensure that it remains an important hub for use by the local community
- The project helps to demonstrate how energy and heritage conservation can work hand in hand.
- A blueprint for future low carbon retrofits that the council is planning across its estate property

Project Case Study – Swiss Cottage Library

- Projects supported include, Air Source Heat Pump, Glazing, LED lighting, Ventilation & Insulation.
- Project funded by the council and through grants from the Public Sector Decarbonisation Scheme
- Project is has been delivered collaboratively by Property Management team and Sustainability teams at Camden Council
- Prior to this project a 50kW Solar PV array was installed in 2017

	Camden Capital	PSDS	Total Investment	Predicted Annual £ Saving	Predicted tCO2e saving
Spend	£1.8m	£1.4m	£3.2m	£31k	138/t
% of total	56%	44%			

Windows

Before



After



North Lights

Before



After



Lighting After



Air Handling Units

Before



After



Air Source Heat Pump



Insight into challenges

Insights into challenges and successes faced by the grant recipient during project delivery.

- A close relationship and clear communication between the council and its contractors meant that any significant increases costs for procuring equipment were communicated ahead of time and avoided.
- As the Library and art gallery is Grade II listed, full planning permission and listed planning request was required. Historic England also needed to be consulted during the process. This process took longer than expected, which increased the delivery period. The council kept Salix Finance aware of progress and were able to access an extension
- The building was kept open to the public throughout the delivery of the project. For some measures such as the lighting replacements and roof lights which required internal scaffold, sections of the library and art gallery had to be cordoned off Installations also took place during evenings and weekends. Communication key.
- Asbestos was contained in the mastic and packers that held the old windows in place. The windows were removed under controlled conditions (air tight tent) and the openings boarded. The use of tents and zoned areas meant we kept the library and art gallery open at all times.
- Whilst delivering the retrofit works, the project team uncovered other critical maintenance work that was required to the building, which would otherwise not have been identified. With scaffolding already in place, the council has been able to deliver these improvements at the same time through its own budgets, with some savings in cost.

Advice for those considering projects

- Ensure that you have a good and constant communication with your lead contractor and ensure that you are up to date on when orders need to place to avoid any cost increases.
- For Grade listed building, consult with your planning authority whilst designing the project and ensure that are apart of the retrofit journey and to ensure that project designs meet planning requirements.
- Be prepared to uncover other maintenance and repair work in the building that may need to be addressed once you start your low carbon retrofit.

Other green initiatives in libraries



- Library of Things at Kentish Town and Kilburn Libraries
- Recycle bins in the public and staff areas
- Library lighting systems on motion sensors and time based
- Library PCs and kiosks are on automated timing systems

Horizon scanning

- Building on the success of Swiss Cottage Library, Camden Council have submitted grant bids to the latest round of the Public Sector Decarbonisation Scheme to support low carbon retrofit of Highgate Library and West Hampstead Library.
- Highgate Library is a Grade II listed building dating back to 1906, whilst West Hampstead library sits within a conservation areas and dates back to 1954.
- At both sites we are looking to decarbonise the heat source by replacing gas boilers with electric heat pump technology. We are also looking to incorporate energy efficiency measures including insulation, glazing, LED lighting, improvements to the ventilation system and building control systems.
- We are also looking at ways to incorporate on-site renewable technologies such as Solar PV.
- If successful with our bids, we are aiming to complete works the retrofit works at both libraries by March 2025.



Horizon scanning

- Waterlow Park Centre is located inside Waterlow Park, which is a conservation area.
- The site was built in the 20th century and spans approximately 574m².
- The Waterlow building is used by LUX, a cultural organisation for the support and promotion of artists working with the moving image. The building is also used as park depot for the council.
- The council has also applied for PSDS funding to support low carbon retrofit works at this site. The intention is to introduce heat pumps, improve insulation levels, upgrade lighting to LED lighting and introduce Solar PV.
- If successful with our bids, we are aiming to complete works the retrofit works at this site by March 2025.



Thank you. Any questions?

Qasim Akhtar - Senior Sustainability Officer

Qasim.Akhtar@camden.gov.uk

Gary Watson – Senior Building Surveyor

Gary.Watson@camden.gov.uk

Fiona Tarn – Head of Libraries

Fiona.tarn@camden.gov.uk