

# Andrew Miller



UK Arts Access Champion

Ruth  
Madeley



Ruth  
Madeley



Kyla Harris



Ruth  
Madeley



Kyla Harris



Francesca  
Mills

**22%** of UK population declare a disability (Office for National Statistics)

## Arts Council England National Portfolio Organisations 2023/24 Disability data:

- 9% Workforce
- 10% Audiences
- 12% Trustees





# Paralympian Sport received funding of £68million for Paris 2024



ArtsProfessional | Jobs | Events & Courses | Services Directory | Advertise | Subscribe | About Us

## Untransformed attitudes

Andrew Miller speaks out on discrimination in the arts, asking why "disabled people are nearly invisible with embarrassingly few leaders".

Follow us on Twitter

#ICYMI: "With lower on-site capacity, reduced travel and ever-changing restrictions during the pandemic, it makes s... t.co/aT1Om8scm

ArtsProfessional | Jobs | Events & Courses | Services Directory | Advertise | Subscribe | About Us

## My experience at Theatre 2016

Following shocking access at the Theatre 2016 conference, Andrew Miller asks: is this why so few disabled people work in theatre?

Follow us on Twitter

#ICYMI: "With lower on-site capacity, reduced travel and ever-changing restrictions during the pandemic, it makes s... t.co/aT1Om8scm

ArtsProfessional | Jobs | Events & Courses | Services Directory | Advertise | Subscribe | About Us

## Will the Change Makers make a difference?

As one of Arts Council England's cohort of Change Makers, Andrew Miller reflects on why he accepted the opportunity and what might change as a result.

Follow us on Twitter

#ICYMI: "With lower on-site capacity, reduced travel and ever-changing restrictions during the pandemic, it makes s... t.co/aT1Om8scm

ArtsProfessional | Jobs | Events & Courses | Services Directory | Advertise | Subscribe | About Us

## No access, no public funding?

Five years after first highlighting discriminatory attitudes in ArtsProfessional, the Government's Disability Champion for Arts and Culture Andrew Miller reflects on progress towards inclusion.

Follow us on Twitter

#ICYMI: "With lower on-site capacity, reduced travel and ever-changing restrictions during the pandemic, it makes s... t.co/aT1Om8scm

ArtsProfessional | Jobs | Events & Courses | Services Directory | Advertise | Subscribe | About Us

## Edinburgh in a wheelchair

Andrew Miller, a regular visitor to the Edinburgh Festival Fringe, shares his shocking experiences of inaccessible venues, poor seats and the city's precarious pavements.

Follow us on Twitter

#ICYMI: "With lower on-site capacity, reduced travel and ever-changing restrictions during the pandemic, it makes s... t.co/aT1Om8scm

Most read features

What can – and should - you charge digital audiences?

15 Sep 2020 Feature

ArtsProfessional | Jobs | Events & Courses | Services Directory | Advertise | Subscribe | About Us

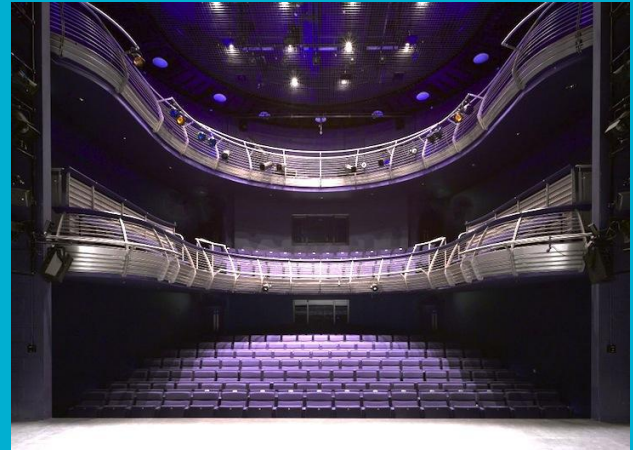
## Freedom of Expression

What can – and should - you charge digital audiences?

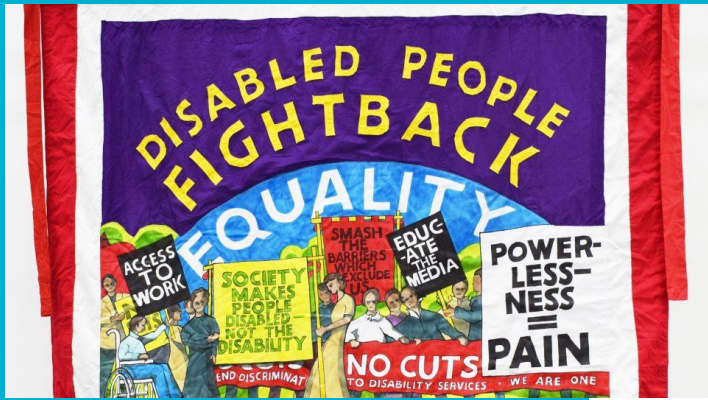
15 Sep 2020 Feature

Recruit professionals









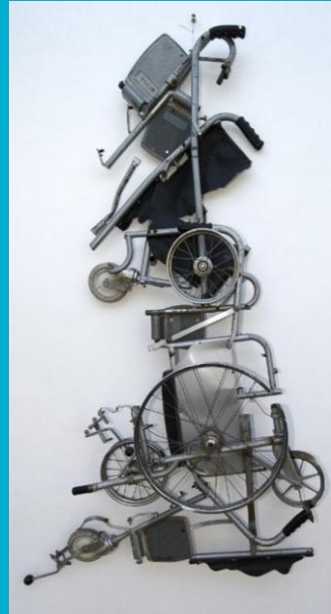
strong and vibrant sector of the arts in

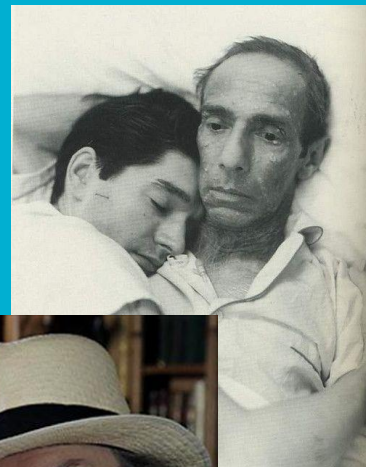
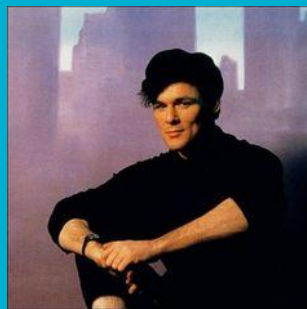
#### DISABILITY ARTS IS

- Controlled by disabled people
- A developing culture
- The culture of disabled people
- The creative voice of disabled people
- Empowering

#### IT CAN ALSO BE

- Political
- A disabled person's interpretation of







**“Both in attitudinal and access terms, we have a long way to go before disabled people can compete on a level playing field in the creative industries”.**

# Andrew Miller



UK Government Disability Champion, Arts & Culture



**WE SHALL  
NOT BE  
REMOVED**

[www.weshallnotberemoved.com](http://www.weshallnotberemoved.com)

# #7InclusivePrinciples

## for the arts in COVID-19



WHAT NEXT?



WE SHALL  
NOT BE  
REMOVED

attitude  
is everything



## Audience Access Alliance

Attitude is Everything  
Disability Collaborative Network

Euan's Guide

Hynt Card

Performance Interpreting

Shape Arts

Signed Culture  
Stagetext

Stay Up Late

The Access Card

Transport For All

Vocaleyes

UK Disability Sector Champions

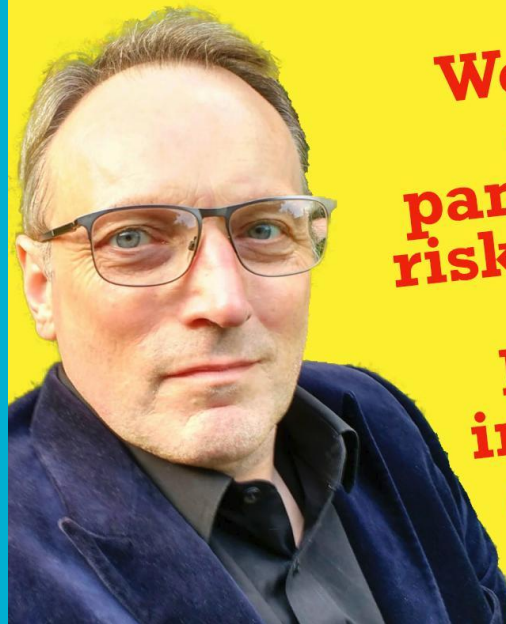
Andrew Miller - Arts and Culture

Heather Smith - Countryside and Heritage

**BFI** pressreset

[bfi.org.uk/pressreset](http://bfi.org.uk/pressreset)

#PressReset



**We mustn't  
allow the  
pandemic to  
risk disabled  
people  
becoming  
invisible in  
our media**

# ableism

***/'eɪblɪz(ə)m/***

***noun***

**1. discrimination in favour of able-bodied people.**



Shaping the next  
**ten  
years**

**Developing a new strategy for  
Arts Council England 2020-2030**

Strategy consultation framework  
Autumn 2018

LET'S  
CREATE

**STRATEGY 2020-2030  
ARTS COUNCIL ENGLAND**

**22%** of UK population declare a disability (Office for National Statistics)

## Arts Council England National Portfolio Organisations 2023/24 Disability data:

- 9% Workforce
- 10% Audiences
- 12% Trustees









# Curating for Change

Disabled People  
Leading in  
Museums





**EVERYONE'S WELCOME**



**allin.online**

# THE BENEFITS OF HYNT

- 76% of disabled cardholders said being part of Hynt **improved** their access to culture
- 73% said Hynt **improved** their quality of life
- Hynt has generated an additional **144,000** theatre audiences since 2015
- Each complimentary ticket generated an average of **£23** in secondary spend

(Hynt Impact Report 2023)



# WHY DO WE NEED ALL IN?

For deaf, disabled, and neurodivergent people, the current situation needs improvement:

- ✦ Lack of **consistency** in access quality
- ✦ **Time-consuming** booking process
- ✦ **Multiple** access schemes
- ✦ **Uncertainty** of accurate admin
- ✦ **Frustration** of access barriers



# ACCESSIBILITY STANDARDS

## **Built environment**

Improving the built environment in and around venues including removing physical obstacles and providing better access

## **Digital communications**

Making digital communication with disabled audiences more accessible, usable and inclusive

## **Customer service**

Working with customer services so that venues and events give a warm welcome to everyone.

## **Commissions, events, and programming**

Building in access to commissions, events and programming at the ideas, budgeting, and development stages

Working with our suppliers:

**attitude**  
is everything

A woman with dark hair tied in a bun, wearing a bright yellow long-sleeved top and dark trousers, is looking up at a large artwork on a gallery wall. She is pointing her right hand towards the artwork. The artwork depicts a person in a pink dress and a blue patterned jacket standing in a field of tall green plants and pink flowers. In the background, other framed artworks are visible on the wall.

## WELCOME TO ALL IN

The new access scheme  
for creativity and culture  
in the UK and Ireland.

[Visit allin.online](https://allin.online)

Things  
Can  
Only  
Get  
Better...?

**There has never been  
a BETTER time  
to be disabled  
and be part  
of the creative industries!**



EVERYONE'S WELCOME



[allin.online](https://allin.online)



[andrew-miller-arts](#)



[@AndrewM\\_Arts](#)